

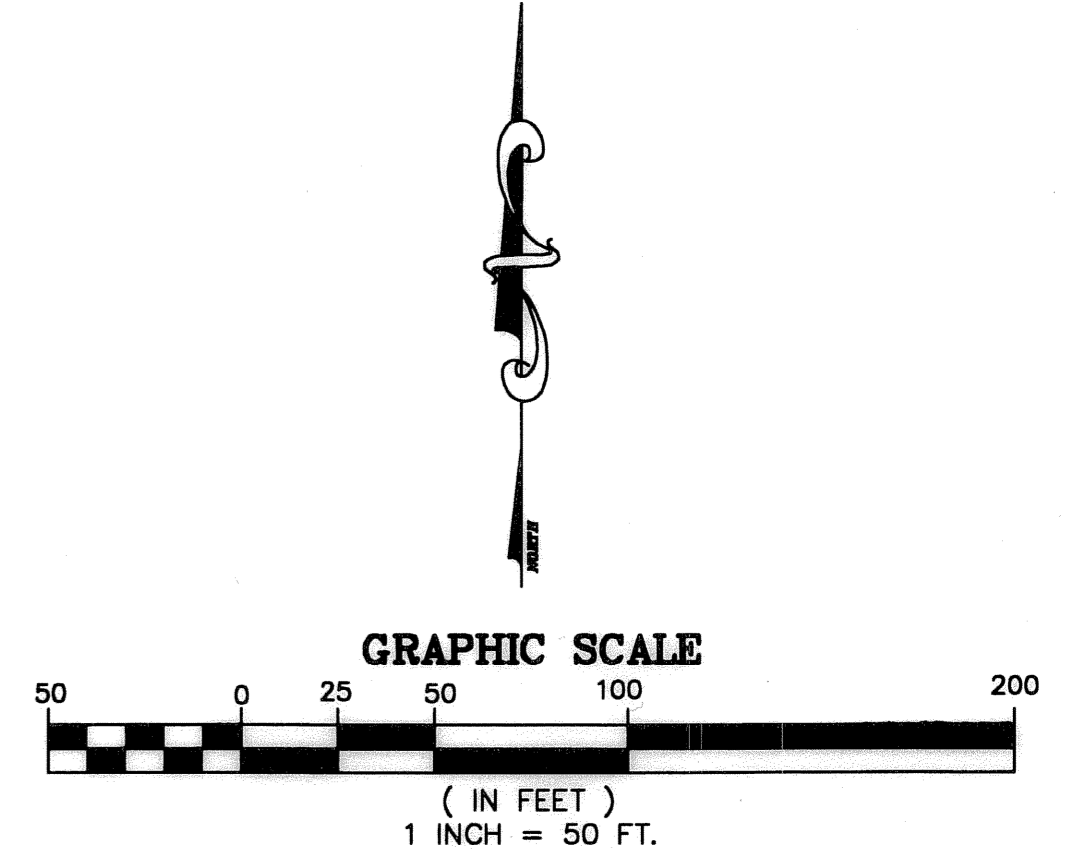
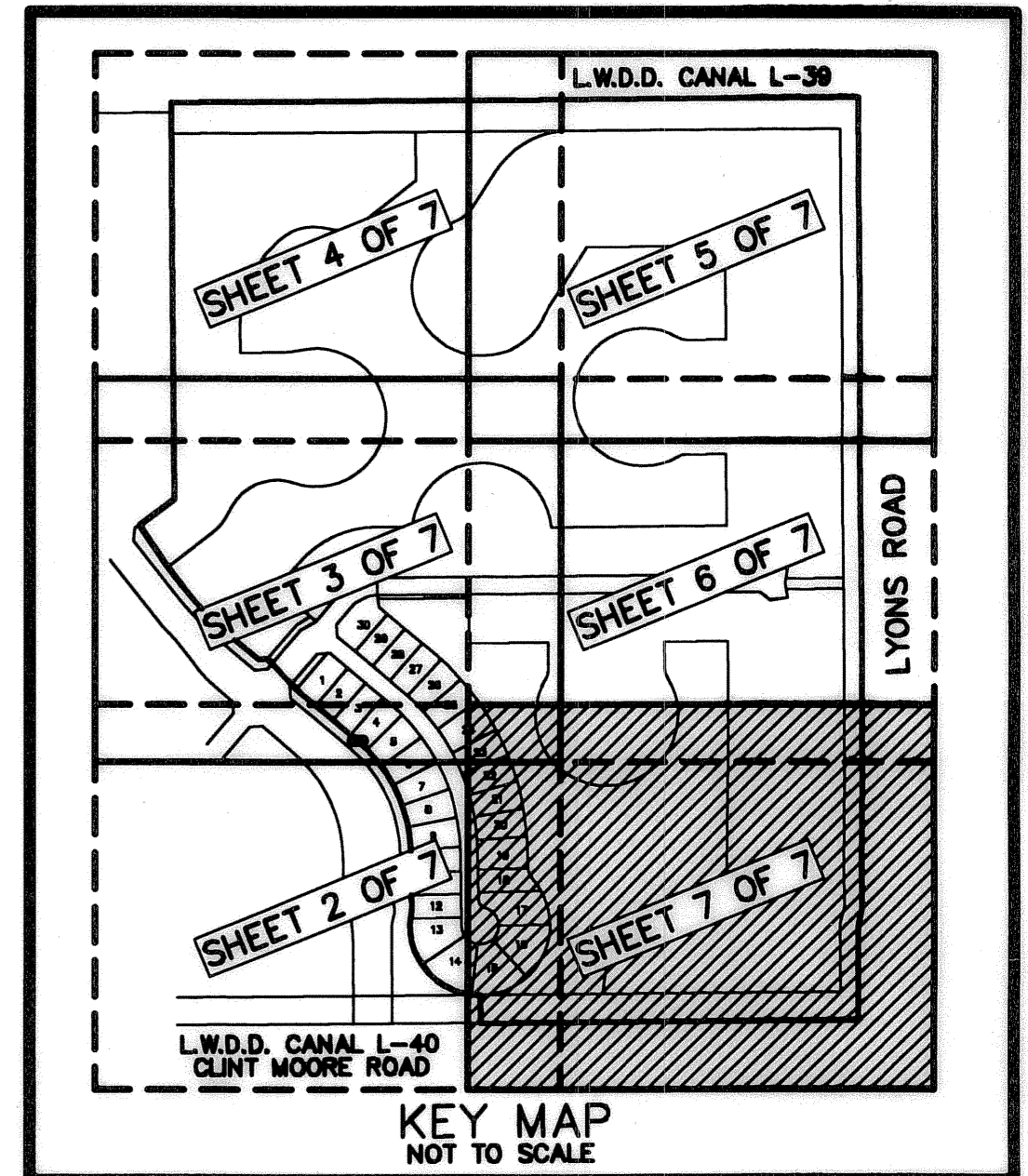
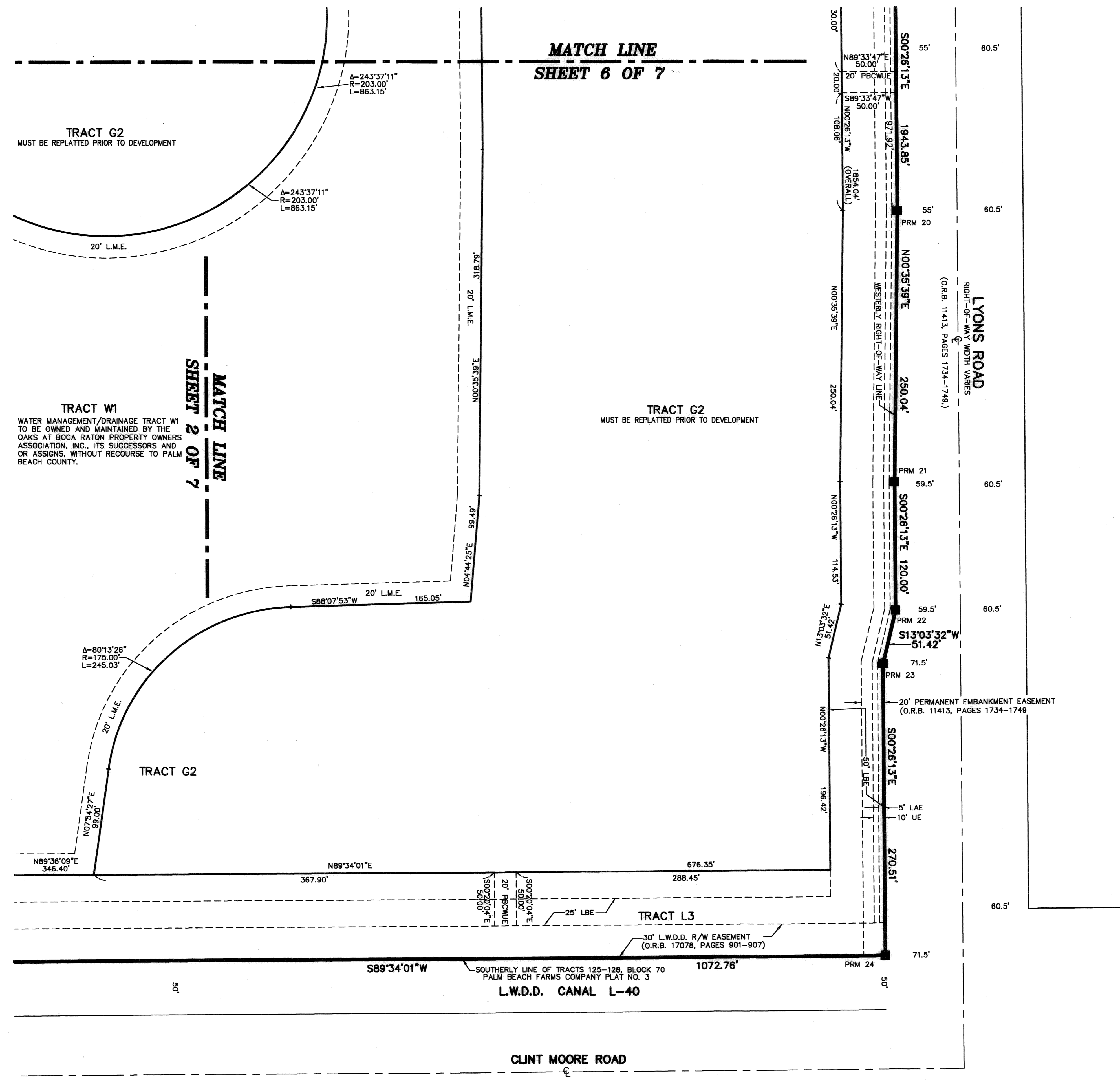
THIS INSTRUMENT PREPARED BY  
DAVID P. LINDLEY  
OF  
CAULFIELD and WHEELER, INC.  
SURVEYORS - ENGINEERS - PLANNERS  
7301-A WEST PALMETTO PARK ROAD, SUITE 100A  
BOCA RATON, FLORIDA 33433 - (561)392-1991  
OCTOBER - 2003

# OAKS AT BOCA RATON PLAT SIX

A PLANNED UNIT DEVELOPMENT BEING A PART OF RAINBOW PUD  
BEING A REPLAT OF A PORTION OF BLOCK 70, "PALM BEACH FARMS COMPANY PLAT NO. 3", AS RECORDED IN PLAT BOOK 2, PAGES 45 THROUGH 54,  
AND TRACT A, OAKS AT BOCA RATON PLAT FIVE, AS RECORDED IN PLAT BOOK 100, PAGES 76 THROUGH 83,  
BOTH OF THE PUBLIC RECORDS OF PALM BEACH COUNTY, FLORIDA  
LYING IN SECTIONS 31 AND 32, TOWNSHIP 46 SOUTH, RANGE 42 EAST,  
AND SECTIONS 5 AND 6, TOWNSHIP 47 SOUTH, RANGE 42 EAST, PALM BEACH COUNTY, FLORIDA

STATE OF FLORIDA  
COUNTY OF PALM BEACH  
THIS PLAT WAS FILED FOR  
RECORD AT \_\_\_\_\_ M.  
THIS \_\_\_\_\_ DAY OF \_\_\_\_\_  
A.D. 2004 AND DULY RECORDED  
IN PLAT BOOK \_\_\_\_\_ ON  
PAGES \_\_\_\_\_ AND \_\_\_\_\_  
DOROTHY H. WILKEN  
CLERK CIRCUIT COURT  
BY: \_\_\_\_\_  
DEPUTY CLERK

SHEET 7 OF 7



NOTES  
COORDINATES, BEARINGS AND DISTANCES  
COORDINATES SHOWN ARE GRID  
DATUM = NAD 83 1990 ADJUSTMENT  
ZONE = FLORIDA EAST  
LINEAR UNIT = US SURVEY FEET  
COORDINATE SYSTEM 1983 STATE PLANE  
TRANSVERSE MERCATOR PROJECTION  
ALL DISTANCES ARE GROUND  
SCALE FACTOR = 1.00002099  
GROUND DISTANCE X SCALE FACTOR = GRID DISTANCE  
BEARINGS AS SHOWN HEREON ARE GRID DATUM, NAD 83 1990  
ADJUSTMENT, FLORIDA EAST ZONE.

SUBDIVISION Oaks At Boca Raton - Plat 6  
BOOK 103  
FLOOD ZONE B  
QUAD # 52  
SE  
TAZ 880  
PUD NAME RAINBOW  
PAGE 63  
FLOOD MAP # 215 A  
ZONING PUD  
ZIP CODE 33446